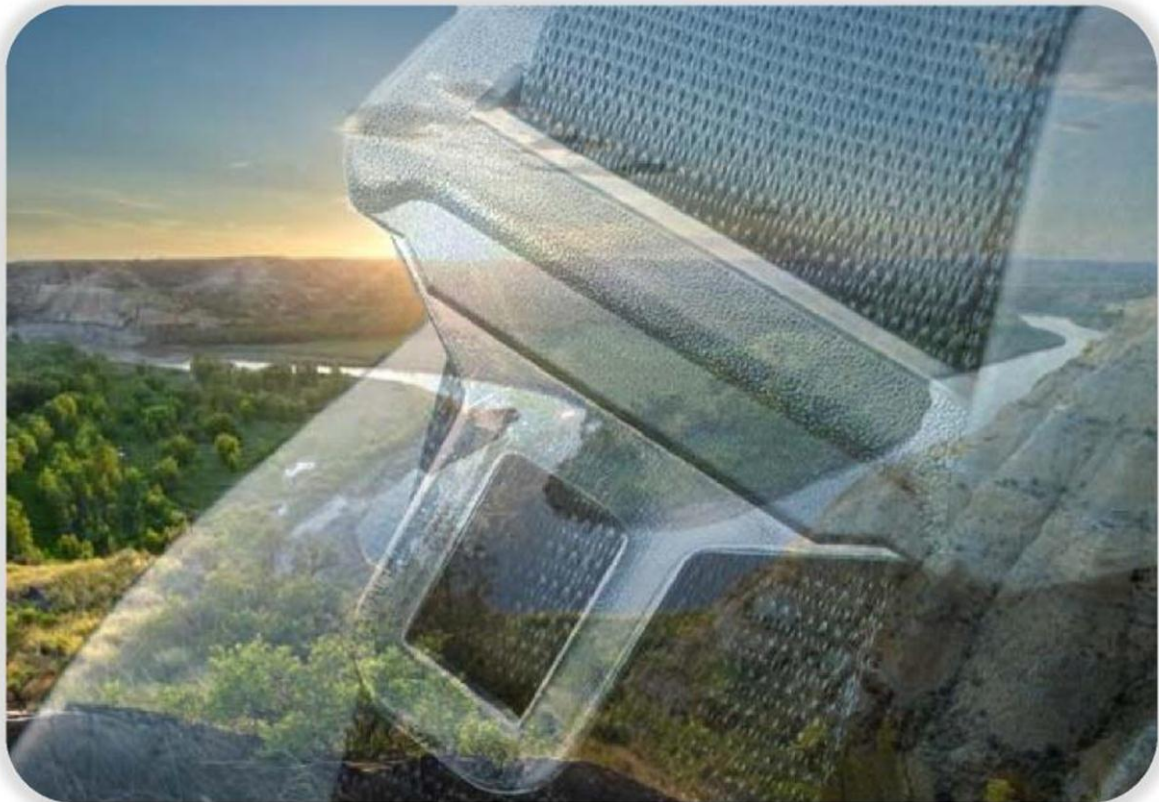


SEAT BELT USE IN NORTH DAKOTA



August 2011

CASS COUNTY

Thank you to North Dakota Tourism and Gerald Blank for
the use of the North Dakota picture used for the
cover page.

THIS REPORT WAS PREPARED IN COOPERATION WITH THE
North Dakota Department of Transportation
Office of Traffic Safety
and
US Department of Transportation
National Highway Traffic Safety Administration
ND Highway Safety Project PHSP402-1105-03-01
Contract Number 12100362

Upper Great Plains Transportation Institute
North Dakota State University, Dept. 2880
P.O. Box 6050
Fargo, ND 58108-6050
Kimberly Vachal¹, Donald Malchose², Andrea Huseth², Laurel Benson³

¹Research Faculty, ²Research Associate, ³Research Project Specialist.

Disclaimer

This research was supported by the North Dakota Department of Transportation and National Highway Traffic Safety Administration. The contents presented in this report are the sole responsibility of the Upper Great Plains Transportation Institute and the authors.

North Dakota State University does not discriminate on the basis of age, color, disability, gender expression/identity, genetic information, marital status, national origin, public assistance status, sex, sexual orientation, status as a U.S. veteran, race or religion. Direct inquiries to the Vice President for Equity, Diversity and Global Outreach, 205 Old Main, (701)231-7708.

INTRODUCTION

The National Occupant Protection Use Survey (NOPUS) provides probability-based data on observed seat belt use in the United States. Surveys funded by the National Highway Traffic Safety Administration (NHTSA) through the North Dakota Department of Transportation (NDDOT) provide state usage data to the NHTSA which disseminates the nationwide statistics. North Dakota's annual survey of seat belt use offers statistically reliable data from which generalizations, comparative analyses and recommendations can be developed. It is an annual benchmark that gives NDDOT a measure of how enforcement, education and other targeted activities influence seat belt use. The 2011 North Dakota seat belt use survey was conducted by the Upper Great Plains Transportation Institute, North Dakota State University. A raw seat belt use rate of 72.3% was observed statewide. Weighting the overall seatbelt use rate by vehicle miles traveled, for both the site and the county, and the probabilities that a county was included in the sample and a site was chosen within that county, the adjusted overall seat belt use rate on state roads was 76.7%.

Cass County is one of 16 counties in which seat belt use was observed for the 2011 North Dakota statewide seat belt survey (Figure 1). The county represents approximately 22.2% of North Dakota's population based on 2009 census estimates.

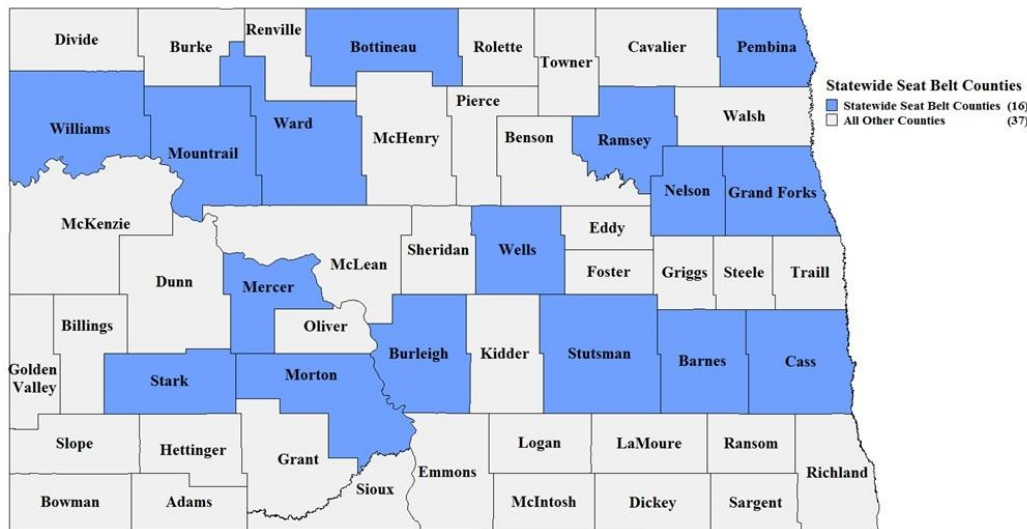


Figure 1: Survey Counties

Estimates of seat belt use were based on observations made at predetermined sites within Cass County during the first full week of June 2011. Observations were collected on 2,416 drivers and 527 outboard front seat passengers for a total of 2,943 vehicle occupants. The rate of seat belt use in Cass County during the 2011 survey was 84.2% for drivers and 84.3% for passengers (Table 1).

Table 1: Cass County: Occupants Observed

Cass County 2011			
	Drivers	Passengers	Total Vehicle Occupants
Number	2,416	527	2,943
Percent Belted	84.2%	84.3%	84.2%

Adjusting or weighting the 2011 raw seat belt use by the North Dakota Department of Transportation’s vehicle miles traveled produces a rate of 86.0% for Cass County. In contrast, the adjusted statewide rate was 76.7% percent. These rates are reflective only of travel on state roadways in the county and not a true county average since they do not include travel on non-state roadways such as city and town travel, or local gravel roads. Cass County seat belt use in 2011 showed a 0.7 percentage point increase over the 2010 adjusted rate of 85.3% (Table 2).

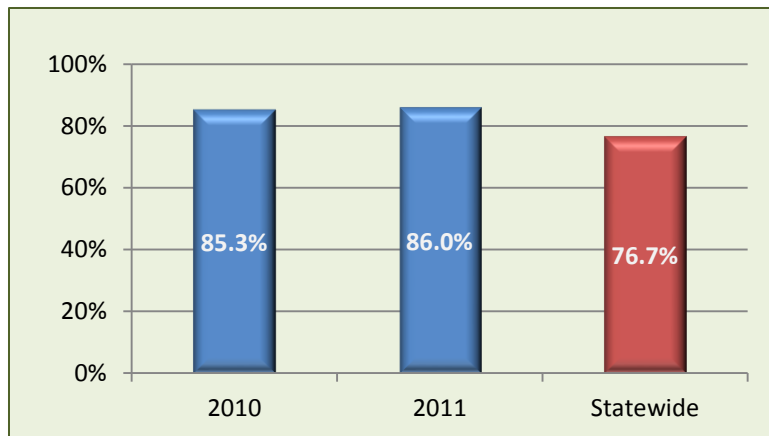


Figure 2: Cass County: Percent Belted 2010 - 2011

Additional county results are detailed in the following pages with graphs and tables reflecting weighted seat belt use for surveyed counties and un-weighted seat belt use by region, vehicle occupant, gender and vehicle type.

All Counties Seat Belt Use

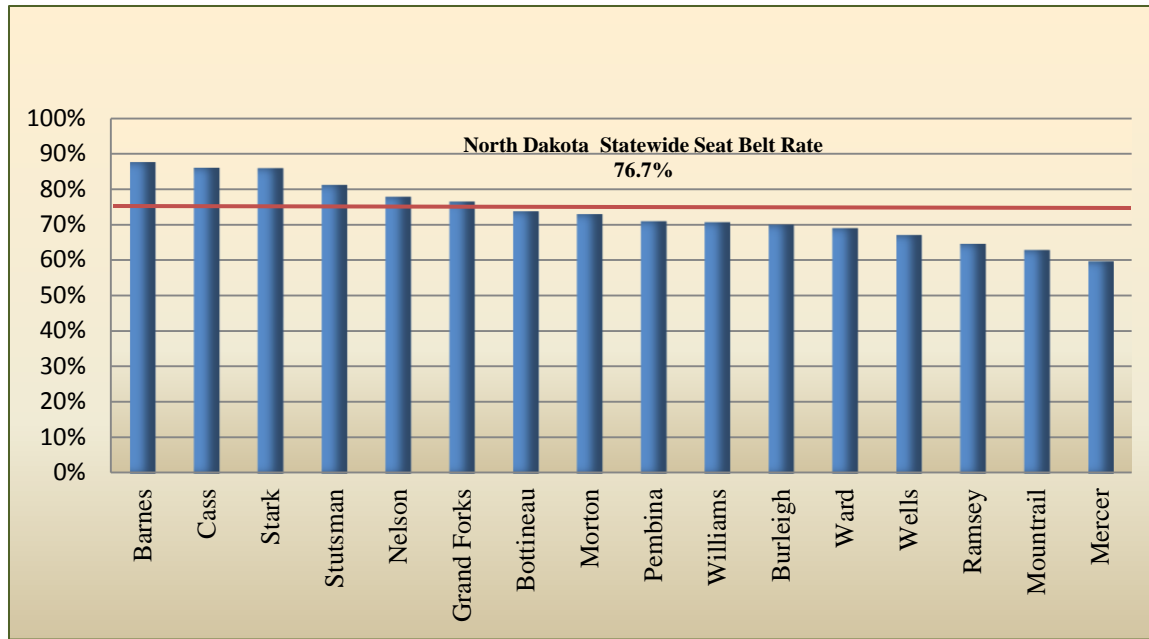


Figure 3: Seat Belt Use by County

Table 2: All Counties Seat Belt Use: 2010 – 2011

Weighted Seat Belt Use by County			
	2010	2011	Percentage Point (+/-)
Burleigh	84.6%	70.1%	-14.5
Morton	77.6%	73.0%	-4.7
Mountrail	66.5%	62.9%	-3.6
Pembina	74.1%	71.0%	-3.1
Ramsey	64.9%	64.6%	-0.3
Cass	85.3%	86.0%	0.7
Nelson	76.2%	77.8%	1.6
Stark	83.0%	85.9%	2.9
Ward	64.3%	69.1%	4.8
Williams	64.8%	70.7%	5.9
Barnes	81.5%	87.5%	6.0
Mercer	53.3%	59.8%	6.5
Grand Forks	69.9%	76.5%	6.6
Bottineau	66.5%	73.8%	7.3
Stutsman	73.1%	81.1%	8.0
Wells	58.8%	67.1%	8.3
Total	74.8%	76.7%	1.9

Cass County: Seat Belt Use by Region and Vehicle Occupant

The remaining graphs represent unweighted or raw observation data based on sampling strata. A total of 20,494 occupants were observed within the selected ND counties during the 2011 survey. A comparison of seat belt use by region is outlined in Table 3.

Table 3: Regional Seat Belt Use, 2011

Occupant	Status	Northwest	Northeast	Southwest	Southeast	Total
Drivers	Belted	64.0%	68.3%	71.8%	79.7%	71.4%
	Count Total	3,939	3,336	4,518	4,597	16,390
Passengers	Belted	64.6%	77.3%	77.6%	83.9%	75.9%
	Count Total	1,076	781	1,075	1,172	4,104
All Occupants	Belted	64.1%	70.0%	72.9%	80.6%	72.3%
	Count Total	5,015	4,117	5,593	5,769	20,494

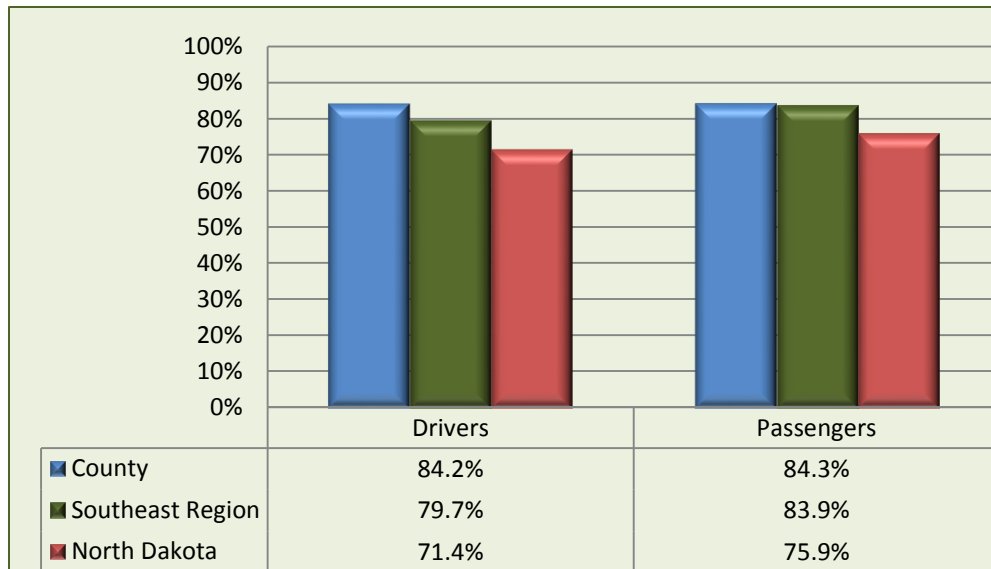


Figure 4: Seat Belt Use by Vehicle Occupant

Cass County: Seat Belt Use by Gender and Vehicle Type

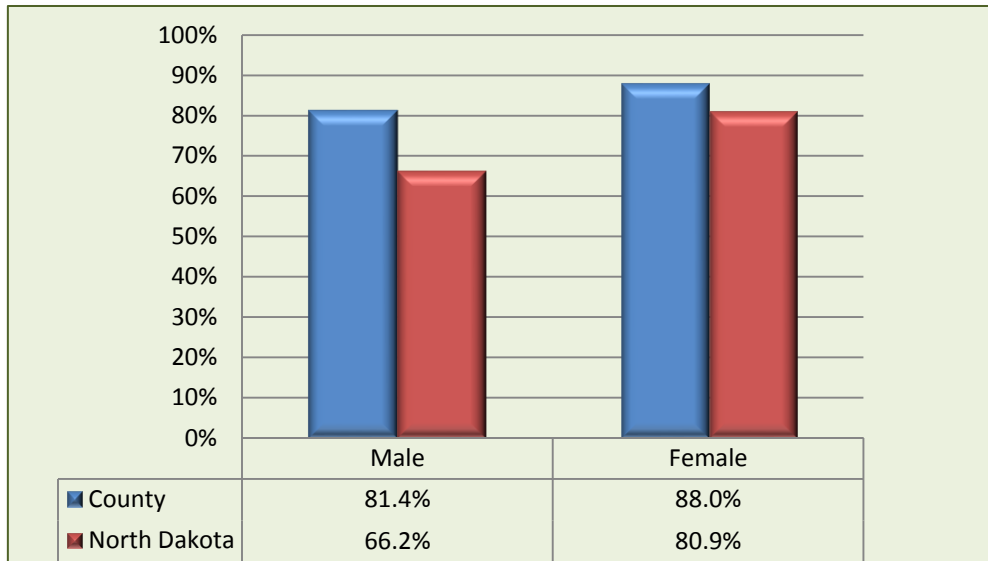


Figure 5: Seat Belt Use by Gender

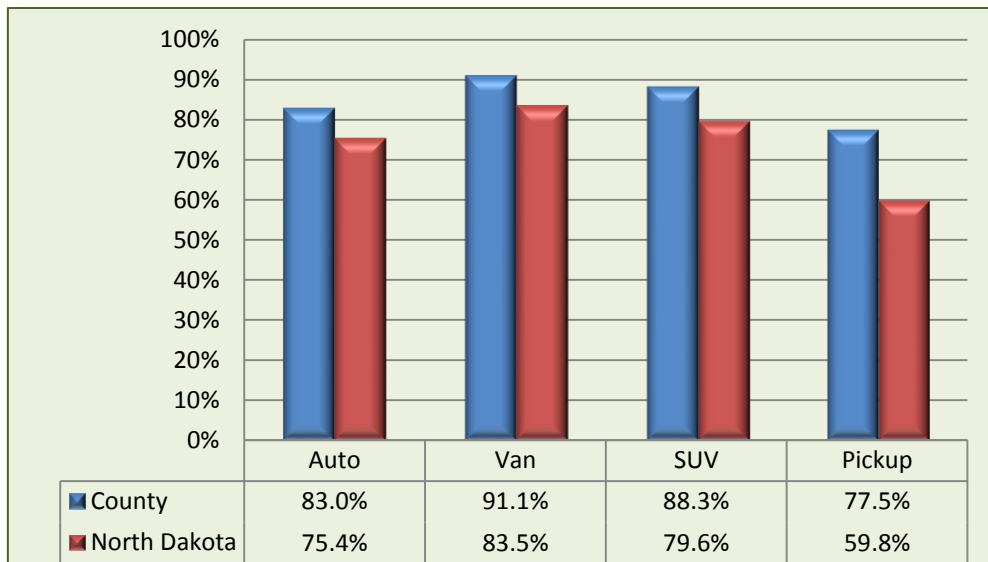


Figure 6: Seat Belt Use by Vehicle Type

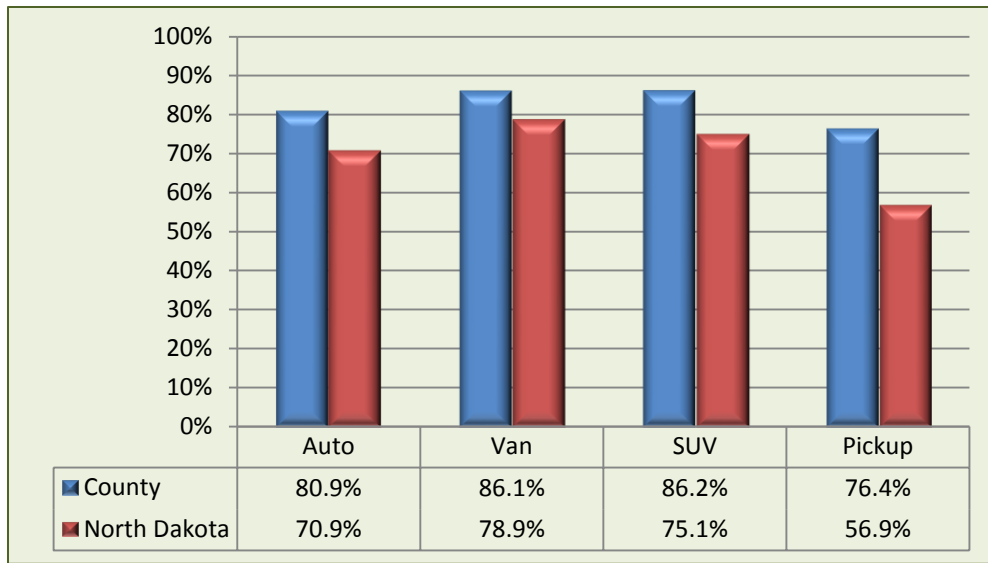


Figure 7: Seat Belt Use by Male Gender and Vehicle Type

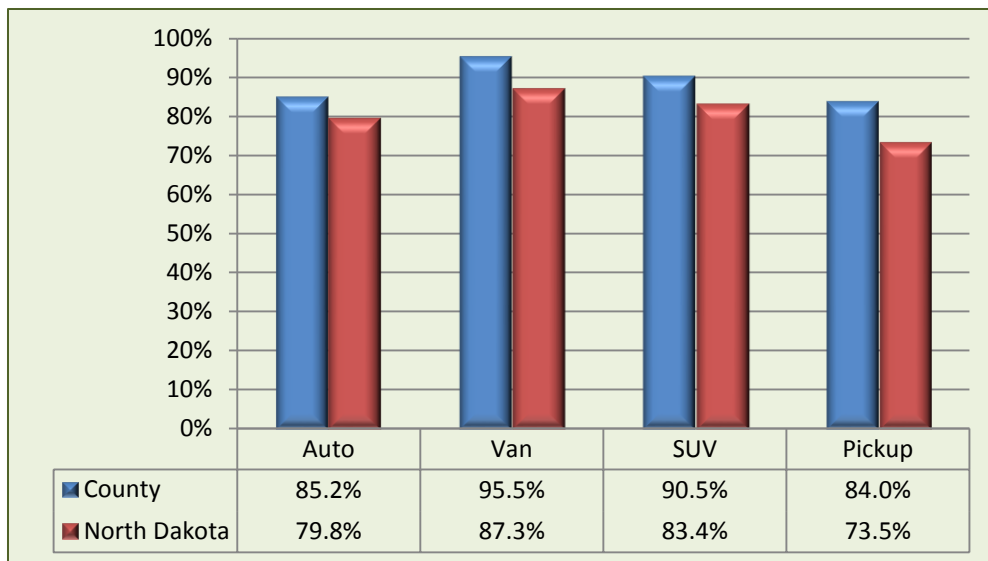


Figure 8: Seat Belt Use by Female Gender and Vehicle Type